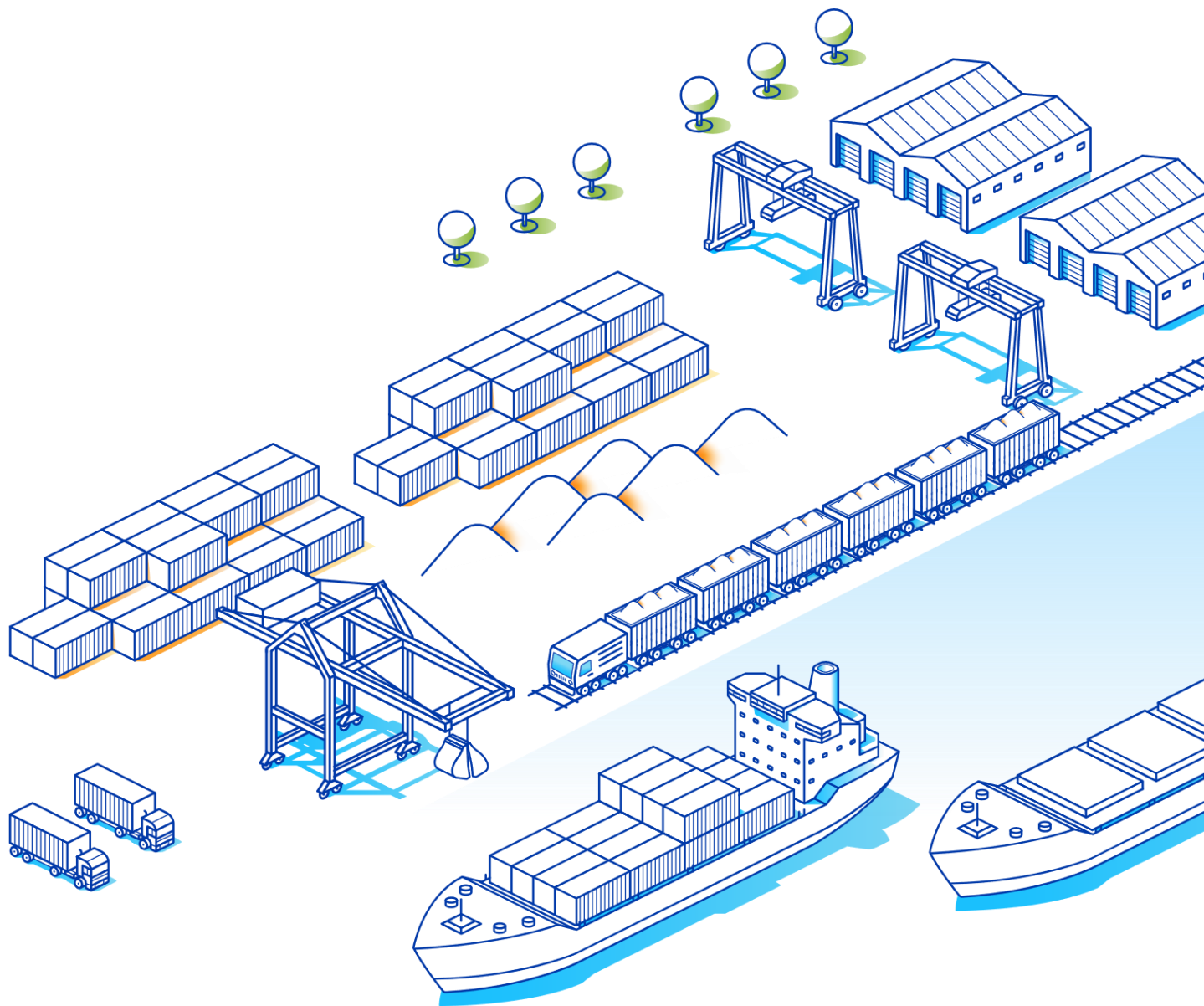




Ports Transport Logistics

Presentation of the
OT Logistics Group



OT Logistics is a **universal freight forwarder** offering a comprehensive range of services by applying a one-stop-shop approach.

Our strength is based primarily on our **comprehensive offer, decades of experience and the highly specialized competences of each member company of the OTL Group.**

OT Logistics in a nutshell



Transport of any cargo



By any combined means of transport



Across all continents



From supplier to customer

- The origins of OT Logistics date back to 1946, when Polska Żegluga na Odrze Sp. z o.o. was established in Wrocław. **"Your load on our shoulders"** was a slogan used in the company's earliest advertising campaigns. Our business is driven by this motto to this day – after all, tradition obliges!
- Decades of experience and the capacities of individual companies of the OT Logistics Group enable us to properly take care of each element of the supply chain.

Since **2013**, OT Logistics has been a **public company** listed on the Warsaw Stock Exchange.

OT Logistics on the Warsaw Stock Exchange

- OT Logistics is included in the sWIG80 index.
- The Company's main shareholders are **La Financière d'Intégration Européenne S.A.** and **Generali PTE S.A.**
- OT Logistics has declared its intention to share the profits earned by the Company with its shareholders. The principle of the Company's dividend policy adopted by the Management Board is to carry out distributions in line with the amount of profit generated and in consideration of the Company's investment plans and financial capabilities.

133%

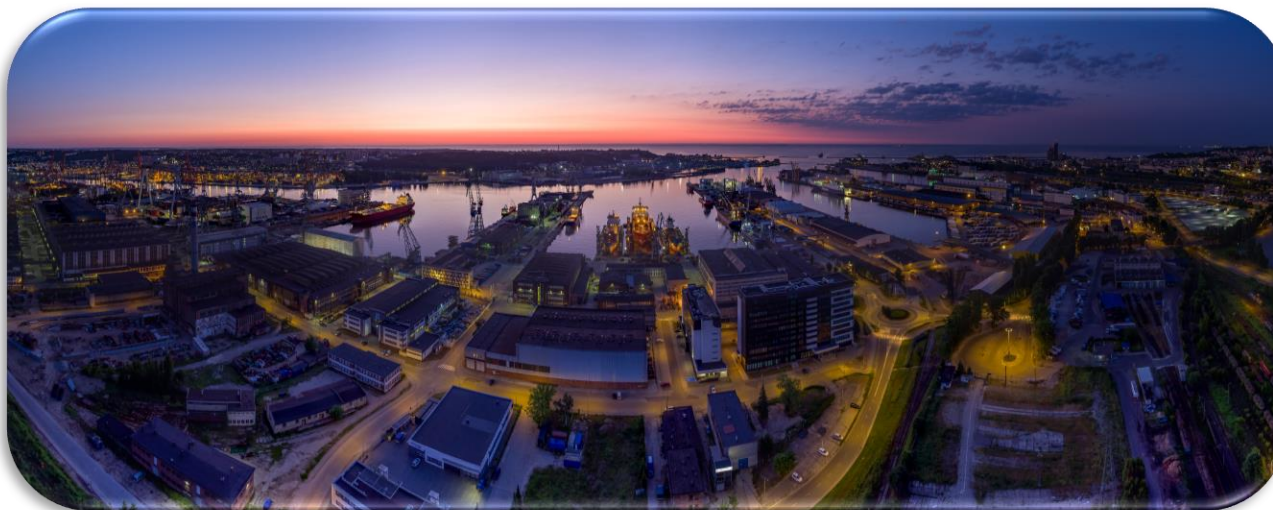
share price growth in 2023

Dividend of **PLN 6.40**
per share distributed for 2022

PLN 668 million

peak capitalization in 2023

Interim dividend of **PLN 2.86**
per share distributed for 2023



The business of the OTL Group is currently focused on a comprehensive range of services for customers using sea transport and the organization of logistics and forwarding processes using various means of transport.

The Group in numbers



2
seaport terminals



630
staff in the Group



20 years
of Kolej Bałtycka's experience



8 million tons
of bulk and general cargo handled in the Group's ports in 2022



Ports Transport Logistics

OT Logistics S.A. along with other companies forming the OT Logistics Group is the **largest and most versatile port operator in Poland and one of the largest in the Baltic Sea basin**. It has been providing transport, forwarding and logistics services for over 70 years.

The OT Logistics Group includes the seaport terminals of **OT Port Świnoujście** and **OT Port Gdynia** with a dedicated ro-ro terminal in Poland. The OT Logistics Group is the owner of the forwarding company **Rentrans Cargo**, the provider of maneuvering and rail transport services **Kolej Bałtycka**, and **Port Żegluga Szczecińska**.



One-stop-shop
services



The Group provides comprehensive **one-stop-shop** logistics solutions, from organizing sea freight, to comprehensive handling in ports, to the final delivery to the customer, regardless of the type of cargo or means of transport.



Our business model

The capacities of all member companies in the Group enable us to take proper care of each element of the supply chain. We offer a full range of logistics services regardless of the type of cargo or means of transport.

The OTL Group's most important markets for its TFL (transport, forwarding, logistics) business are the following sectors of the economy:



**Metallurgy
and power**



**Construction
materials,
aggregates**



Agribusiness



Fertilizers



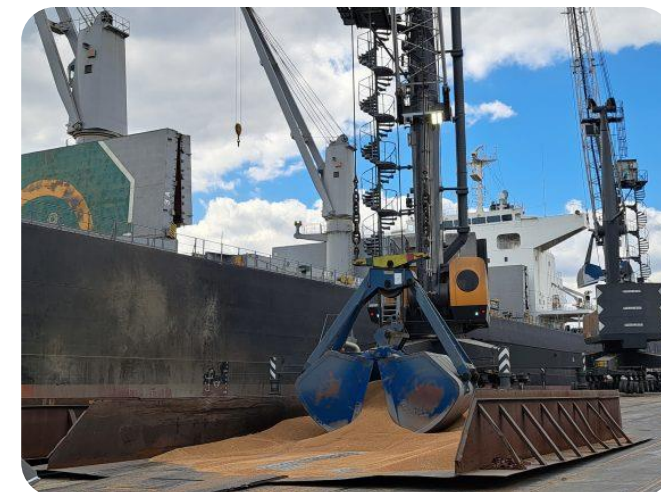
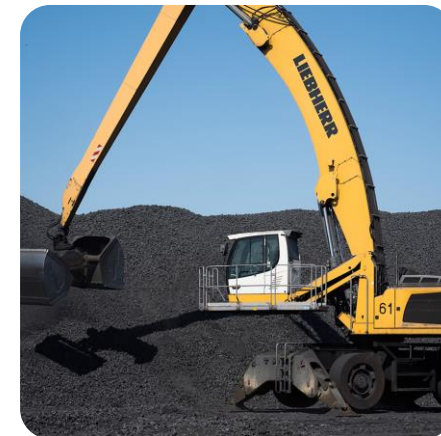
Containers



General cargo



Ro-ro



Operating segments

Port operations

- comprehensive transshipment handling,
- warehousing, storage, and forwarding services

Forwarding operations

- provision of comprehensive logistic services in the door-to-door system,
- Organization of transportation by sea, road, rail and in containers through all Polish seaports.

Freight forwarding supports other segments of the OTL Group by organizing transportation using port terminals.

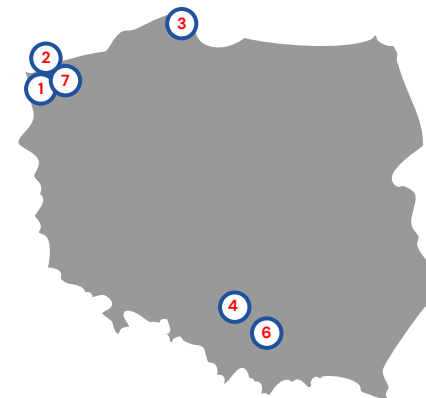
Rail operations

- provision of comprehensive rail transportation services in the form of shipments, handling of sidings and maneuvers by Kolej Bałtycka.

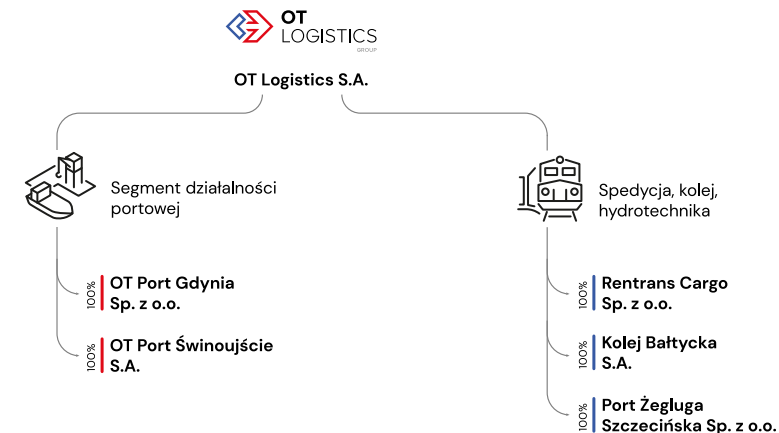
Hydrotechnical and other operations

- activities related to inland waterway transport, auxiliary transportation services for hydro projects,
- lease and rental of vessels, etc.

This segment also includes real estate rental activities and other ancillary activities.



1. OT Logistics – Szczecin
2. OT Port Świnoujście – Świnoujście
3. OT Port Gdynia – Gdynia
4. OT Logistics – Katowice
5. Rentrans Cargo – Szczecin
6. OT Logistics – Kraków
7. Kolej Bałtycka – Szczecin



Port operations – OT Port Świnoujście

A rapidly growing universal port, which is the largest bulk cargo handling center on the Polish west coast.



SCOPE OF SERVICES:

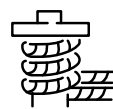
- Transshipment and storage of dry bulk cargo, general cargo, containers in conventional lo-lo technology;
- Rail, barge and freight forwarding services;
- Stuffing and de-stuffing of containers;
- Additional port services, such as weighing, packaging, sorting, storage, mixing, crushing of bulk cargo;
- Rental of reloading equipment and accessories, machinery and equipment, and dockers to other companies.



16,000 m²
total area of grain
elevators



8 million tons
annual reloading
capacity



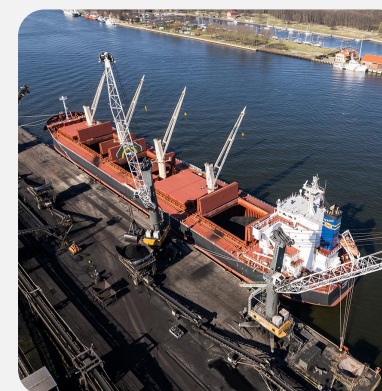
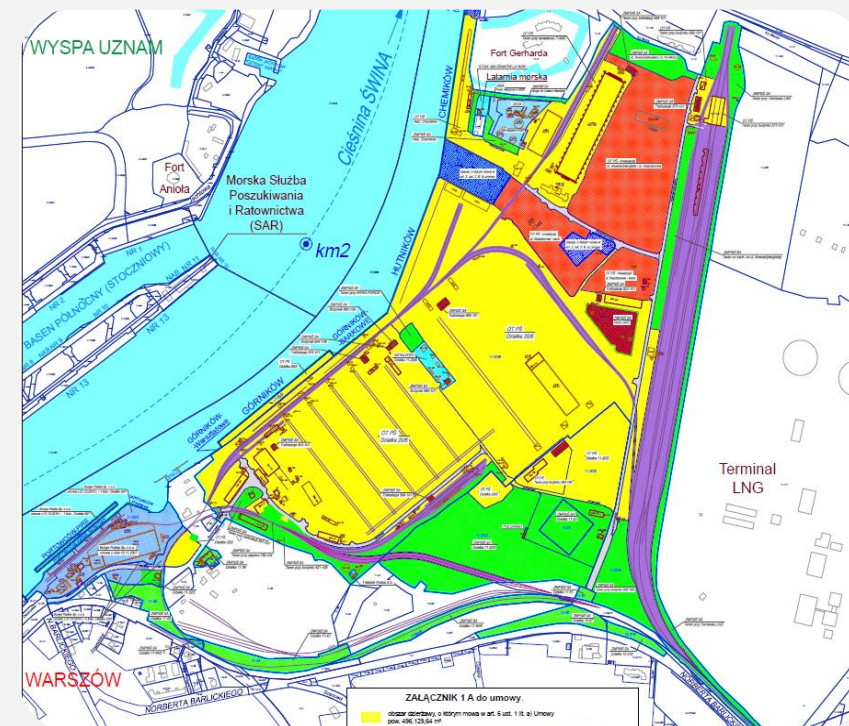
1,655 m
total quay
length



13.2–13.5 m
draft



250,000 m²
storage area



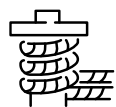
Port operations – OT Port Gdynia

Poland's most universal sea terminal. It is located within basins IV and V of the port of Gdynia with direct access to 6 port quays.



SCOPE OF SERVICES :

- Reloading and storage of bulk goods, i.e. grain, soybean meal, coal, coke and other bulk goods in the conventional lo-lo system;
- Reloading and storage of unitized general cargo, including paper, cellulose, steel products, semi-trailers, vehicles, machines in the conventional lo-lo, ro-ro, sto-ro and cassette systems;
- Reloading and storage of containers in ro-ro and lo-lo systems, including tank-containers, refrigerated containers and containers with IMO dangerous cargo;
- Forming and stripping of roll trailers (RTs), cassettes, semi-trailers and containers, and other additional port services.



2,870 m
total quay
length



Up to **14.5** m
draft



134,000 m²
yard area



5 million tons
annual reloading
capacity



151,000 m²
storage area



74,000 m²
storage area



Forwarding operations – Rentrans Cargo



Rentrans Cargo provides customers with modern logistics solutions providing them with a competitive edge. The company provides 24-hour ship agency services in all Polish seaports and ship repair yards. Customers are offered comprehensive forwarding and logistics solutions, perfectly tailored to their specific needs.

SCOPE OF SERVICES:

- Comprehensive international forwarding of goods via land (rail and road), sea and inland transport in Poland and Europe;
- Organization of transport (including inland navigation transport) of all types of cargo;
- Organization of transshipment of all types of cargo in Polish sea and river ports, at railway terminals and border crossings;
- Organization of goods storage in Polish sea ports;
- Customs agency services;
- Comprehensive vessels chartering services for the transport of all types of cargo, including any bulk cargo, as well as general cargo and oversized cargo;
- Comprehensive 24-hour agency service for vessels in all Polish seaports and shipyards.
- Handling of conventional and container shipments along with full delivery service to/from the port;

The Group also carries out ambitious hydrotechnical and construction projects, such as dredging rivers, building bridges, building breakwaters, building container terminals and expanding the LNG terminal in Świnoujście. Our knowledge and extensive experience have been appreciated by the largest construction companies in Poland.



Sea
transport



Road
transport



Rail
transport



Intermodal
transport



3.5 million tons
cargo transported in
2022



PLN 1.3 billion
estimated value of
goods transported
during the year



Rail operations – Kolej Bałtycka



Kolej Bałtycka provides a broad range of services in the field of rail transport in Poland – transport of bulk goods, rail vehicles, siding services and work trains. Owing to an extensive base of diesel locomotives, the company has become the main rail operator in Western Pomerania, serving the Szczecin Rail Junction (including the port) and the Świnoujście seaport port on a round-the-clock basis.

SCOPE OF SERVICES:

- Rail services at the ports of Szczecin and Świnoujście
- Transportation of bulk cargo (including chemicals, fuels, coal, aggregates)
- Specialized types of transport (extraordinary shipments, track machines, etc.)
- Comprehensive handling of railway sidings and construction sites
- Border transfers (mainly DE–PL)
- Traction services



464,200 tons
goods transported
in 2020



12
rolling stock
locomotives

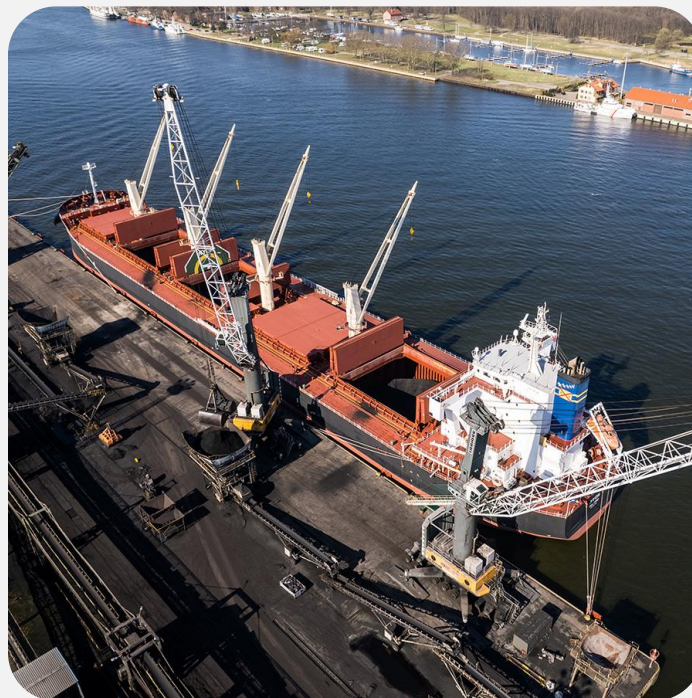
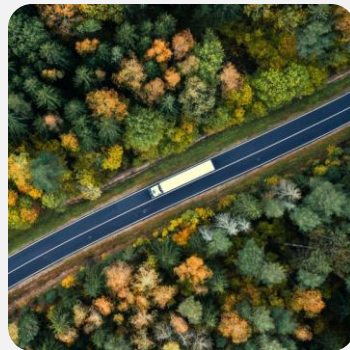


72
train drivers
employed



45
setters
employed





- **OT Logistics S.A.**
ul. Zbożowa 4
70-653 Szczecin, Poland

e-mail: info@otlogistics.pl